



Nottingham Molecular Pathology Node

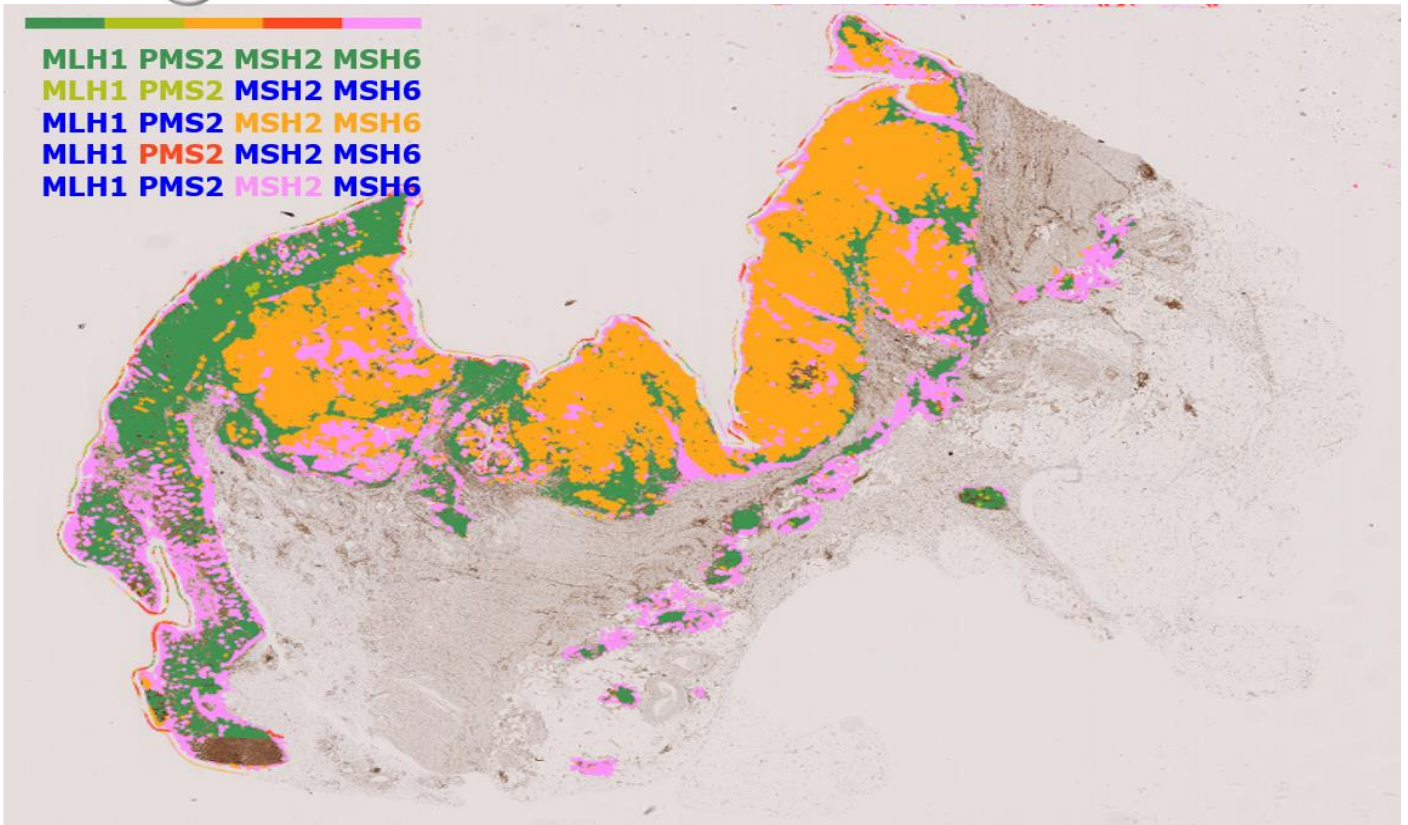


Image Analysis Training School 2019

Thursday 26th & Friday 27th September



The University of
Nottingham

UNITED KINGDOM • CHINA • MALAYSIA



Overview

Image Analysis Training School 2019

26th & 27th September 2019

Park Plaza Hotel, Nottingham

Overview

Digital pathology aided by robust image analysis techniques has made great inroads in both diagnostics and research in histopathology. The implementation of whole slide scanning and advances in software and computer processing capacity has profoundly impacted not only routine clinical diagnosis but also molecular testing including bio-banking, molecular profiling and companion diagnostic development. The school returns for it's second year and aims to:

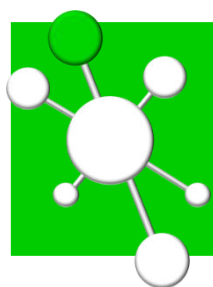
- Provide a comprehensive overview of the current use of image analysis in pathology diagnosis and research including practical examples
- Address how potential problems in image analysis can be resolved
- How digital pathology can be integrated in the work-stream

Who should attend?

The course is suitable for Trainee and Consultant Pathologists with little or no experience of image analysis and for non-clinical scientists/computer experts (who may have some experience with digital platforms) wishing to learn more about the techniques and application of image analysis. Teaching will be delivered in the form of formal lectures and interactive work projects.

The Image Analysis Training School is proudly supported by the European Society of Digital and Integrative Pathology





Registration & Fees

Bookings can be made via our secure online store

All rates include refreshments and lunch throughout the course.

Please note accommodation is not included in the registration fee. This can be booked directly with the venue (see below for details)

Registration & Fees

Molecular Diagnostics Training School (MDTS) delegate

Places are free of charge to those attending the MDTS

FREE

NON-Molecular Diagnostics Training School (MDTS) delegate

£150

Accommodation

Accommodation can be booked directly with the Park Plaza at a rate of £97.00 per night. To book a room, contact 0333 400 6148 and quote code MOLE220919.

£97 per
night

Book your place via our online store:

<https://store.nottingham.ac.uk/>

Contact us at...

Email MS-NMPN@nottingham.ac.uk

Web www.NMPN.info

Twitter @NMPNUK



Programme

Thursday 26th September: Basic principles of image analysis & research applications

08:55	Introduction	Mohammad Ilyas University of Nottingham, UK
09:00	Basics of digital imaging including lexicons	Vincenzo Della Mea University of Udine, Italy
09:45	Quantitative histo-morphometry: segmenting tissue compartments in H&E and IHC images	Alain Pitiot Illixa and TG
10:30	Spatial reasoning for histological imaging	Gabriel Landini University of Birmingham, UK
11:15	Refreshments	
11:45	Deep learning and diagnostic pathology	Vincenzo Della Mea University of Udine, Italy
12:30	Lunch & refreshments (lunch will be served in the Chino Latino restaurant)	
13:30	Assessing immunohistochemistry: Scoring methods and pitfall	Abhik Mukherjee University of Nottingham, UK
14:15	Assessing immunohistochemistry: Solutions from image analysis	Dr Sotirios Lakis Definiens, Germany
15:00	Refreshments	
15:30	Histogenic molecular mapping: multivariate analysis of IHC biomarkers	Alain Pitiot Illixa and TG
16:15	Image analysis in digital pathology: What are the main challenges?	Mohammad Ilyas University of Nottingham, UK
17:00	Close	

Friday 27th September: Diagnostic applications

09:00	Strategies and demands for digital pathology workflow integration	Liron Pantanowitz UPMC, Pittsburgh, USA
10:00	Image quality: Issues, techniques and assessment metrics	Gloria Bueno UCLM, Ciudad Real, Spain
10:30	Refreshments	
11:00	Scanner technology: What makes an ideal scanner?	Norman Zerbe Charité - Universitätsmedizin, Berlin
11:45	Industrial presentations	
13:00	Lunch & refreshments (lunch will be served in the Chino Latino restaurant)	
14:00	The promise of computational pathology	Nasir Rajpoot University of Warwick, UK
14:30	RCPATH guidelines for implementing diagnostic digital pathology	David Snead University Hospitals Coventry, UK
15:00	Refreshments & panel discussion	
15:30	Implementation of digital pathology – How to win the argument	David Snead University Hospitals Coventry, UK